



The Complete IT Backbone for **Architecture,** **Engineering,** and **Construction** Firms

High-Performance Workstations · Secure Networks · Remote Access · Localized AI
Specialized in AEC (Architecture | Engineering | Construction)

Phone

[+91 9028566587](tel:+919028566587)

Website

www.designsbykira.in

Address

1st floor above Ashish Clinic Gokhale
cross-road, Model Colony, Pune,
Maharashtra, India - 411016



Our Clients





Why AEC Firms Choose CDK

➤ In **Architecture**, **Engineering**, and **Construction**, every second counts. System crashes, slow file transfers, and IT bottlenecks don't just waste time they derail projects and frustrate talented teams.

➤ CDK delivers complete IT solutions designed specifically for AEC workflows. From purpose-built workstations to secure networks and AI integration, we eliminate the technical friction that holds creative firms back.

➤ We're your unified IT strategy partner, ensuring your technology enhances productivity rather than limiting it.





AEC-FOCUSED WORKSTATIONS

CDK General Purpose Systems



For Reception Admin HR
Accounting MS Office,
emails, ERP

CDK APU Workstations



For AutoCAD 2D SketchUp Adobe
PREDCR Daily architectural
workflows

CDK 3D Rendering Workstations



For 3D modeling BIM Lumion,
Enscape, D5 V-Ray, Twinmotion
Heavy scenes & photorealistic
rendering

CDK Server & Infrastructure Solutions



Centralized project storage
Render servers NAS systems AI
workflow servers Secure office
networks

Our systems deliver near zero-crash reliability even with large CAD, BIM, and 3D files, faster workflow speeds that reduce waiting time, and costefficient builds tailored specifically for AEC needs.

GENERAL PURPOSE SYSTEM

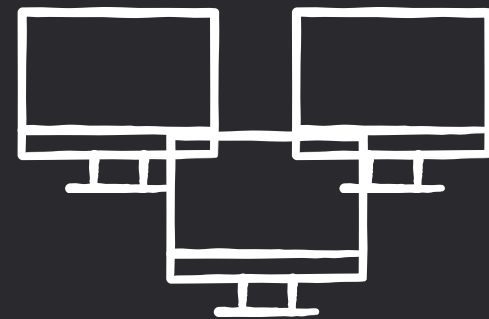
Reliable systems for everyday business and office workflows.



- ▶ Accounting and finance applications
- ▶ ERP, HRMS, and enterprise tools
- ▶ Office productivity and documentation
- ▶ Video conferencing and collaboration
- ▶ Day-to-day operational workflows
- ▶ Support three displays that allow you to see more and do more
- ▶ Dual LAN: the best way to back up your file



Bluetooth 5.3

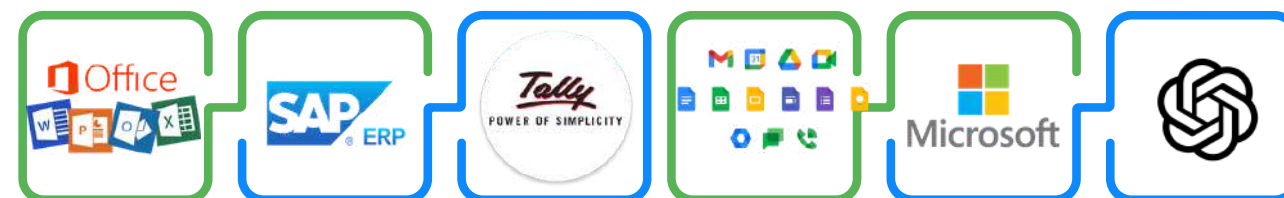


Supports 3 Display
(8k UHD Display)



WIFI 6E

Seamless performance on softwares like



request a benchmark → Contact CDK for a tailored quote.

+91 9028566587



APU SYSTEMS

Designed for architects - engineered for performance

Starting From 45,000/-

Cost-efficient: workstation reliability without workstation price.

- ▶ Runs ALL 2D CAD & drafting workflows flawlessly.
- ▶ Ultra-fast DDR5 + Gen-4 NVMe for instant file loads & large projects.
- ▶ Low power, low noise, Compact — ideal for studios and shared offices.
- ▶ Smooth SketchUp modelling + snappy preview renders.



Seamless performance on softwares like



request a benchmark → Contact CDK for a tailored quote.

[+91 9028566587](https://wa.me/919028566587)



3D RENDERING WORKSTATIONS

- ▶ Built for ultra-heavy 3D scenes and photorealistic rendering workflows.
- ▶ Handles large textures, high-poly models, simulations, and heavy assets.
- ▶ Ideal for architects, 3D artists, animators, and visualization studios.
- ▶ Handles large textures, high-poly models, simulations, and heavy assets.
- ▶ Zero-lag multitasking across SketchUp, 3ds Max, Blender, Lumion, Enscape & D5.
- ▶ Optimized thermals for long rendering sessions without throttling.



Seamless performance on softwares like



Engineered for studios: stable, reliable, and production-grade performance. Built, tested, and optimized by CDK for peak render performance.



CDK ENTERPRISE SERVERS FOR AEC WORKFLOWS

High-reliability servers engineered for continuous uptime, fast data access, secure storage, and seamless performance across enterprise, cloud, and rendering workflows.



Optimized for massive project files, shared modeling, and multi-user access



Enterprise-grade security for confidential architectural data



Designed around your exact requirements, CDK servers deliver optimized processing, scalable storage, enhanced security, and long-term stability—ideal for virtualization, data analytics, render farms, AI workloads, and the growing compute demands of modern AEC firms.



Enterprise Cybersecurity & Remote Work Solutions

CDK protects your firm's data while enabling secure remote work, fast collaboration, and safe access to project files—without compromising performance or productivity.



Secure WFH & Remote Collaboration



Work safely from anywhere with secure remote access for architects & engineers.



Peak IT Performance Across AEC Operations



Fast, stable connectivity for CAD, BIM, and visualization workflows.



Enterprise-Grade Cybersecurity



Protection for your entire IT environment emails, workstations, and servers.



Intelligent Access Control & Data Protection



Role-based access and encrypted security for sensitive project files.



Scalable IT Infrastructure for Modern AEC Studios

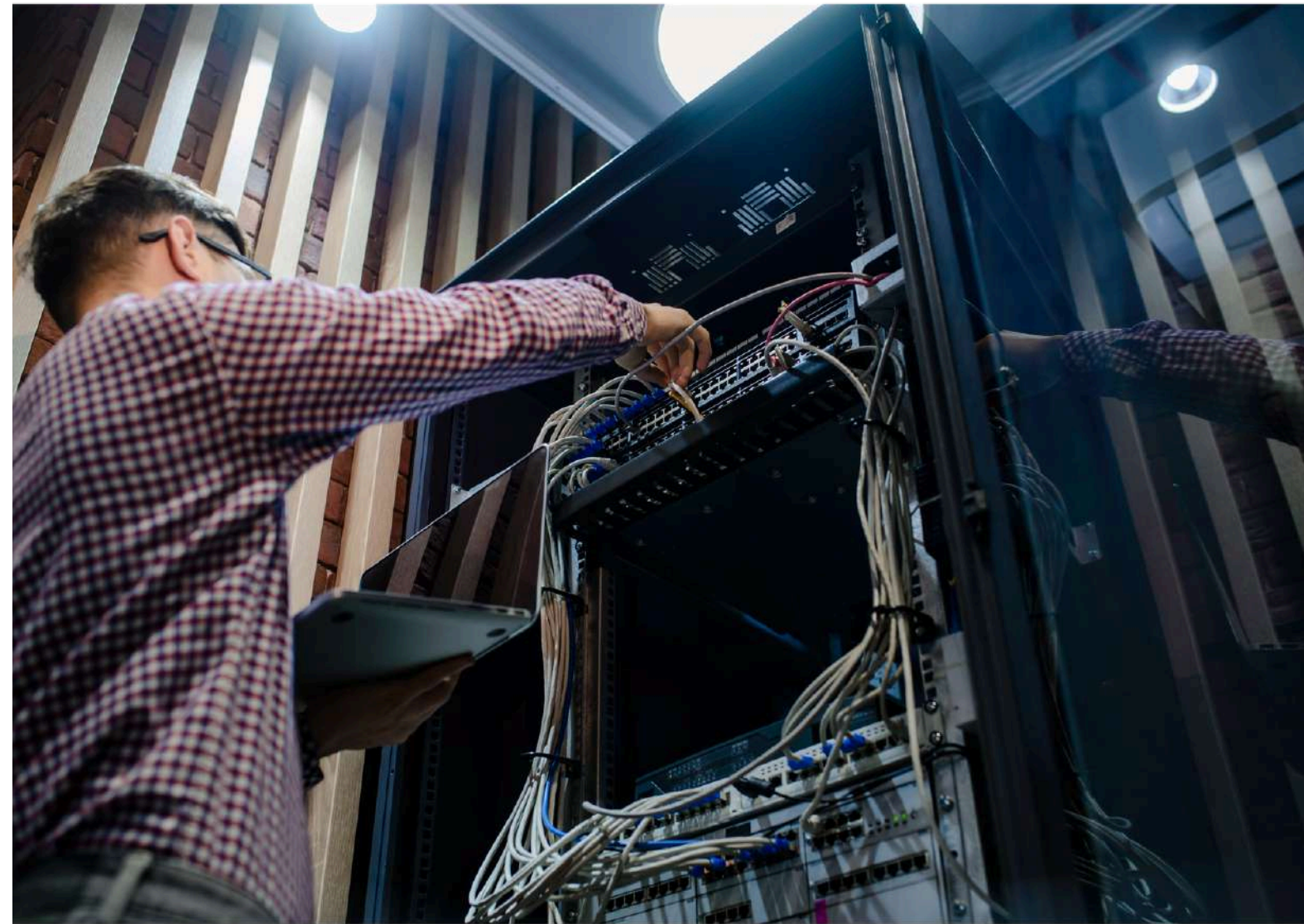
AEC firms depend on large files, shared project data, and multiple teams working simultaneously across complex projects. CDK builds fast, structured, and scalable networks that eliminate bottlenecks and ensure smooth collaboration throughout your organization.

➤ Enterprise Servers & Storage

High-uptime servers designed for shared CAD/BIM models and large project files.

➤ RDP & Cloud Integration

Secure remote access for teams working across sites and project locations.



➤ Network Design & Optimization

Structured, high-speed networks built to support heavy AEC workflows.

➤ Ground-Level LAN / WAN Setup

Complete onsite cabling, deployment, and network infrastructure setup.

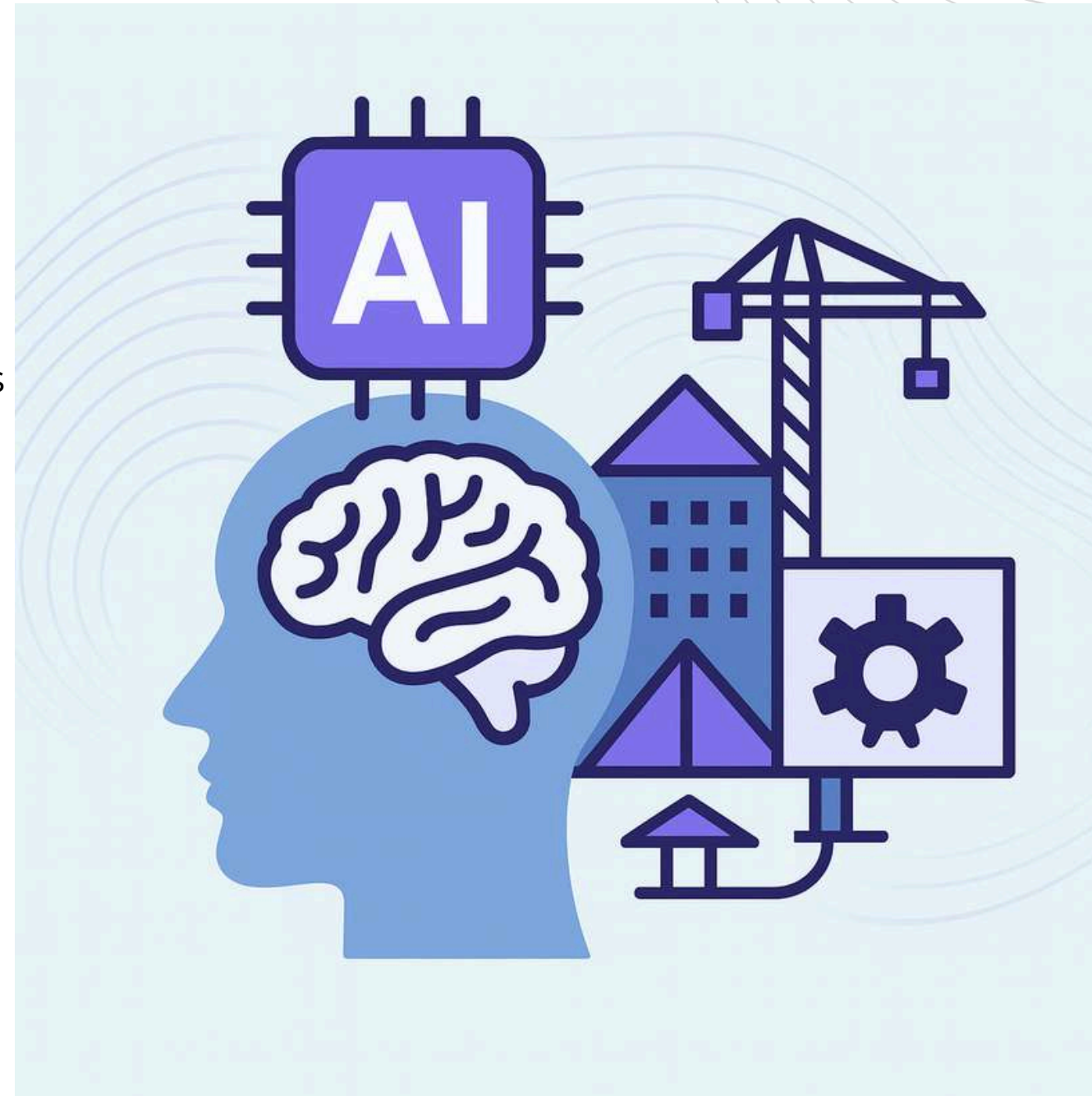
www.designsbykira.in



Localized AI Integration for Architectural Workflows

CDK deploys localized, secure, and high-performance AI systems tailored for architectural, engineering, and construction workflows — enhancing planning, design, analysis, and project delivery without relying on cloud-based limitations.

- Boosts efficiency for project teams and reduces repetitive manual tasks.
- Supports faster decision-making across design, costing, and documentation.
- Improves transparency and reduces errors during project execution.



- Works smoothly alongside Revit, AutoCAD, SketchUp, Primavera & more.
- No cloud dependency — your firm's data stays fully in-house and protected.
- Delivers faster outputs, automated reports, and productivity improvements.

www.designsbykira.in

AI solutions engineered specifically for the architecture industry — secure, scalable, and tailored for your firm's unique workflows.



Unified IT Strategy

CDK delivers complete IT strategy under one roof—covering workstations, networks, servers, security, cloud, remote access, and AI integration—built specifically for the needs of AEC organizations.

➤ We identify gaps, bottlenecks, and opportunities for improvement.

➤ Your strategy is aligned with design, BIM, rendering, and project execution needs.



➤ Full implementation without interrupting ongoing architectural projects.

➤ Ensures long-term reliability, performance, and Near zero-downtime operations.

www.designsbykira.in

One strategic partner for all your IT needs—designed for speed, security, and scalability across your entire AEC workflow.

Thank You

Get in touch Today!

Phone

+91 9028566587

Email

info@designsbykira.in

Address

1st floor above Ashish Clinic Gokhale cross-road,
Model Colony, Pune, Maharashtra, India - 411016

www.designsbykira.in